

# Library

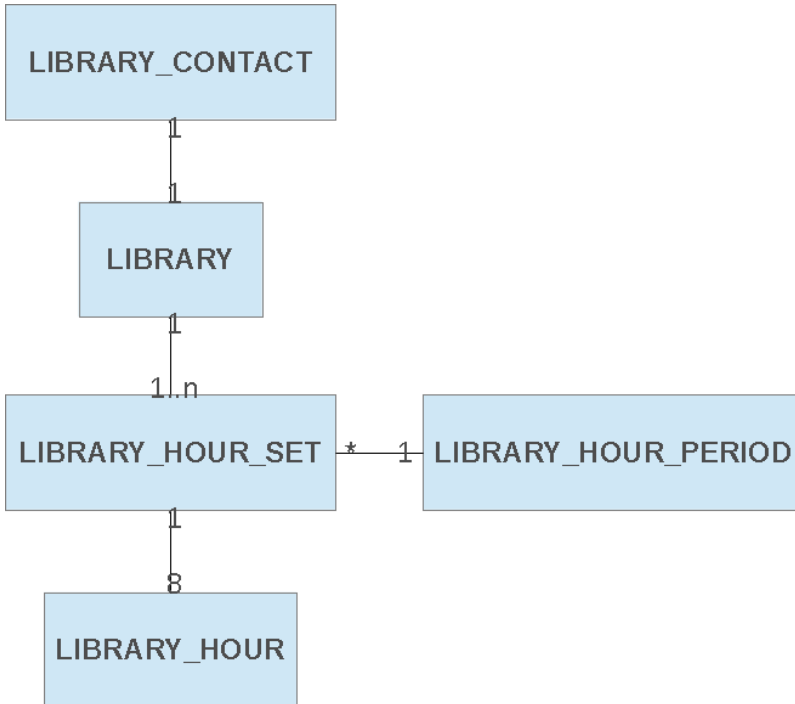
- Overview
  - Database relation
  - Library Hour Periods
  - Library Hour Sets
  - Library Hour
- Configuring the tool for your institution
- Localising library names
- Screenshots

## Overview

The library tool is used to show information about libraries at an university's campuses. The tool allows users to view contact and open hours details. Admin features allows users to edit the contact and open hours

## Database relation

The diagram below illustrates the relation the Library tool tables have to each other



## Library Hour Periods

An hour period is typical time windows where the library hours will change, example Recess and Semester hours. KME by default supports 2 hour periods: Recess and Semester. More periods can be added using database scripts, and by providing localised names for these periods by means of property files.

## Library Hour Sets

An hour set is a group of hours within an Period. An hour set contains an hour for every day of the week, and one for public holidays. You MUST add all 8 hours to an hour set

## Library Hour

A library hour contains the open and closing times for a library on a specific day. A Library hour can also indicate that the library is completely closed on a day.

You MUST add all 8 hours to an hour set

## Configuring the tool for your institution

### Add Library Periods

If you want to add more periods other than Recess and Semester, you have to provide labels for them in property files (How to?)

#### Add Library Periods

```
INSERT INTO LIBRARY_HOUR_PERIOD(ID, LABEL, ORDR) VALUES (1,'library.semester',1);
INSERT INTO LIBRARY_HOUR_PERIOD(ID, LABEL, ORDR) VALUES (2,'library.recess',2);
```

### Add Library Contacts

Each library can have one (or none) contact details. Not all fields are required.

#### Add Library Periods

```
INSERT INTO LIBRARY_CONTACT_DETAIL (ID, EMAIL, FAX, GENERAL_INFO_DESK, LATITUDE,
LONGITUDE, PHYSICAL_ADDR, POSTAL_ADDR, TELEPHONE, VERSION) VALUES
(1,'library1@example.com','012 345 6879','021 546 5555',NULL,NULL,'Exactly where you
want us to be','Exactly where you want to post to','012 345 6879',0);
```

### Add Library

When adding libraries it is important to note that the "CAMPUS\_CODE" column must match a campus in the CampusSpringBeans.xml file, else the library will not be displayed in the application.

Here you can add as many libraries as you like, a campus can also have more than one library - the "ORDR" column will dictate the order in which they are displayed in the application

#### Add Library

```
INSERT INTO LIBRARY (ID, ACTIVE, CAMPUS_CODE, NAME, ORDR, LIBRARY_CONTACT_ID) VALUES
(1,0x01,'UA','library1 @ IU All',1,1);
```

### Add hour sets

For each Library you should add one hour set per Library Period.

#### Add Library

```
INSERT INTO LIBRARY_HOUR_SET (ID, LIBRARY_ID, PERIOD_ID) VALUES (1,1,2);
INSERT INTO LIBRARY_HOUR_SET (ID, LIBRARY_ID, PERIOD_ID) VALUES (2,1,1);
```

### Add Library Hours

You now need to add hours to the hour sets. Each hour set MUST have 8 hours in the set.

Day of the week starts at 1 (Monday) and ends at 8 (Public Holiday)

The records below are examples for the library opening at 7am and closing at 5pm, while being closed on Sundays and public holidays

## Add Library

```
INSERT INTO LIBRARY_HOUR (ID, DAY_OF_WEEK, FROM_TIME, TO_TIME, HOUR_SET_ID) VALUES
(1,1,'0002-12-31 07:00:52','0002-12-31 17:00:52',1);
INSERT INTO LIBRARY_HOUR (ID, DAY_OF_WEEK, FROM_TIME, TO_TIME, HOUR_SET_ID) VALUES
(2,2,'0002-12-31 07:00:52','0002-12-31 17:00:52',1);
INSERT INTO LIBRARY_HOUR (ID, DAY_OF_WEEK, FROM_TIME, TO_TIME, HOUR_SET_ID) VALUES
(3,3,'0002-12-31 07:00:52','0002-12-31 17:00:52',1);
INSERT INTO LIBRARY_HOUR (ID, DAY_OF_WEEK, FROM_TIME, TO_TIME, HOUR_SET_ID) VALUES
(4,4,'0002-12-31 07:00:52','0002-12-31 17:00:52',1);
INSERT INTO LIBRARY_HOUR (ID, DAY_OF_WEEK, FROM_TIME, TO_TIME, HOUR_SET_ID) VALUES
(5,5,'0002-12-31 07:00:52','0002-12-31 17:00:52',1);
INSERT INTO LIBRARY_HOUR (ID, DAY_OF_WEEK, FROM_TIME, TO_TIME, HOUR_SET_ID) VALUES
(6,6,'0002-12-31 07:00:52','0002-12-31 17:00:52',1);
INSERT INTO LIBRARY_HOUR (ID, DAY_OF_WEEK, FROM_TIME, TO_TIME, HOUR_SET_ID) VALUES
(7,7,NULL,NULL,1);
INSERT INTO LIBRARY_HOUR (ID, DAY_OF_WEEK, FROM_TIME, TO_TIME, HOUR_SET_ID) VALUES
(8,8,NULL,NULL,1);
INSERT INTO LIBRARY_HOUR (ID, DAY_OF_WEEK, FROM_TIME, TO_TIME, HOUR_SET_ID) VALUES
(9,1,'0002-12-31 07:00:52','0002-12-31 17:00:52',2);
INSERT INTO LIBRARY_HOUR (ID, DAY_OF_WEEK, FROM_TIME, TO_TIME, HOUR_SET_ID) VALUES
(10,2,'0002-12-31 07:00:52','0002-12-31 17:00:52',2);
INSERT INTO LIBRARY_HOUR (ID, DAY_OF_WEEK, FROM_TIME, TO_TIME, HOUR_SET_ID) VALUES
(11,3,'0002-12-31 07:00:52','0002-12-31 17:00:52',2);
INSERT INTO LIBRARY_HOUR (ID, DAY_OF_WEEK, FROM_TIME, TO_TIME, HOUR_SET_ID) VALUES
(12,4,'0002-12-31 07:00:52','0002-12-31 17:00:52',2);
INSERT INTO LIBRARY_HOUR (ID, DAY_OF_WEEK, FROM_TIME, TO_TIME, HOUR_SET_ID) VALUES
(13,5,'0002-12-31 07:00:52','0002-12-31 17:00:52',2);
INSERT INTO LIBRARY_HOUR (ID, DAY_OF_WEEK, FROM_TIME, TO_TIME, HOUR_SET_ID) VALUES
(14,6,'0002-12-31 07:00:52','0002-12-31 17:00:52',2);
INSERT INTO LIBRARY_HOUR (ID, DAY_OF_WEEK, FROM_TIME, TO_TIME, HOUR_SET_ID) VALUES
(15,7,NULL,NULL,2);
INSERT INTO LIBRARY_HOUR (ID, DAY_OF_WEEK, FROM_TIME, TO_TIME, HOUR_SET_ID) VALUES
(16,8,NULL,NULL,2);
```

### Admin permissions

To be able to edit content in the library tool you will need a user to belong to the LIBRARY\_ADMIN group.

The following SQL can be used to add the group to the system (if not already configured)

```
INSERT INTO KME_GROUP_T (GROUP_X, GROUP_NM) VALUES ('Library admin permission',
"LIBRARY_ADMIN");
```

Depending on you database it might automatically add the primary key, or you have to manually add a primary key to the script.

You also have to link your user to belong to this group:

```
INSERT INTO KME_GROUP_MEMBERSHIP_T (GROUP_ID, USER_ID) VALUES (THE_GROUP_ID,
THE_USER_ID);
```

Replace THE\_GROUP\_ID with the primary key of the group you created earlier, and replace THE\_USER\_ID with the ID of your user. Logout and log back in, and you should have access to the admin pages of the library tool.

## Localising library names

To localise library names, the name has to be set as a localised property name. At the moment it will mean that your institution will have to configure a localised file which contains the names of those libraries

In the future these names will be configurable by running a database script for your institution - in the future localisation will reside in the database.

## Screenshots

TODO, add screenshot of tool