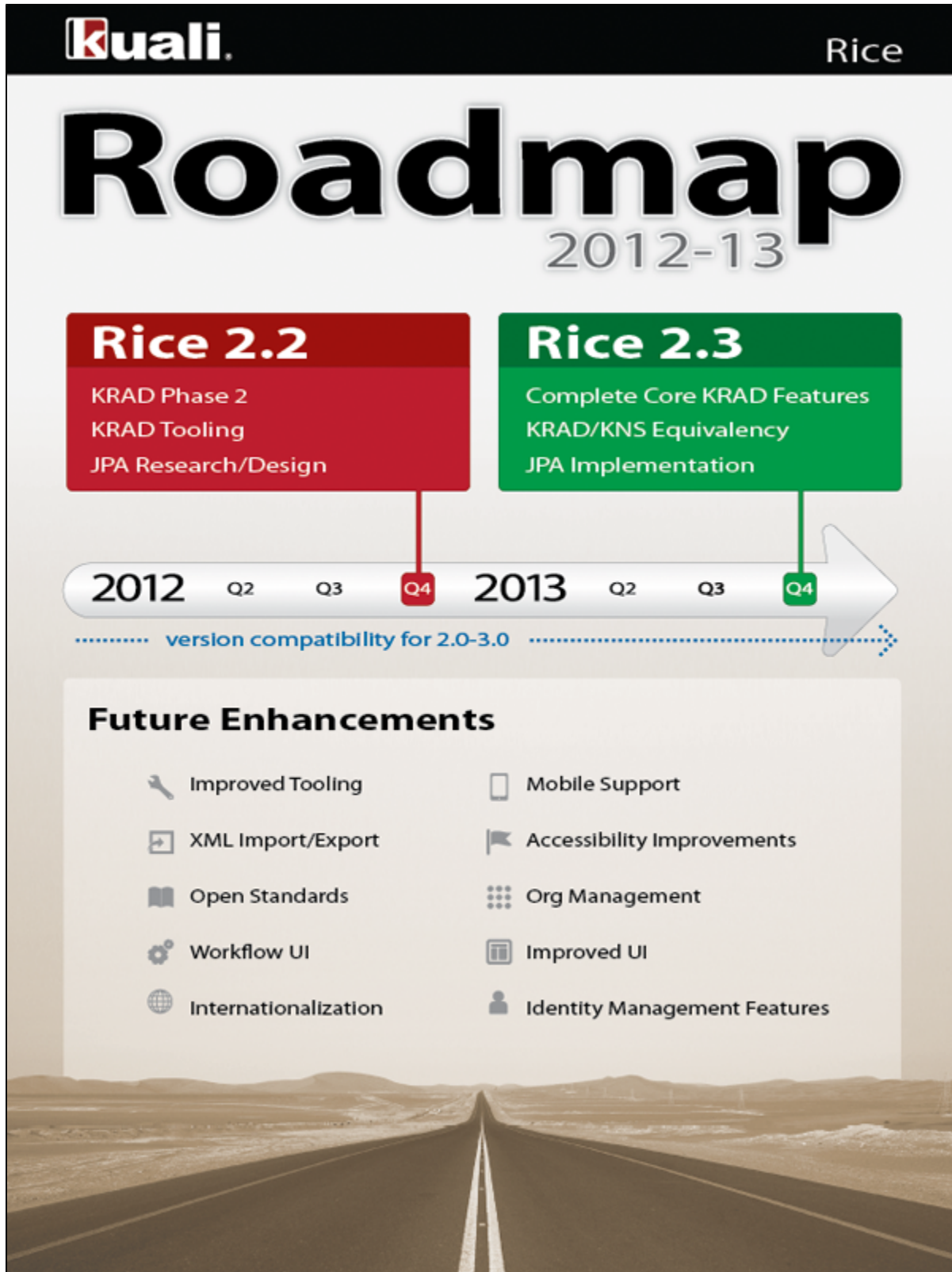


Kuali Rice Roadmap 2012



More on KNS and KRAD

KRAD (Kuali Rapid Application Development) is the next generation of the KNS (Kuali Nervous System).

- Learn more about KNS (Kuali Nervous System) at <http://www.kuali.org/rice/modules/kns>
- More on KRAD at <http://www.kuali.org/rice/modules/krad>

Timelines

View a more detailed timeline and breakdown of Rice 2.2 features at [Rice 2.2 Project Plan with Milestones](#) and information on 2.3 Planning at [Rice 2.3 Project Plan](#). Note that due to the large scope of the items in 2.3 as well as the desire to get changes out to the community on a regular basis, the Roadmap items are now being delivered over 3 releases: Rice 2.3, 2.4, and 2.5. Please email rice.info@kuali.org with any questions.

Maintenance patch releases and Milestone code releases are made available with greater frequency.

See details on our release cycles, i.e. frequency of major, minor, and patch releases at [Rice Roadmap - Release Cycles](#).

Features

| key | summary | assignee | fixVersion | status |
|-----|---------|----------|------------|--------|
|-----|---------|----------|------------|--------|

| | | | | |
|--|--|--|--|--|
| com.atlassian.sal.api.net.ResponseException: javax.net.ssl.SSLHandshakeException: Received fatal alert: handshake_failure View these issues in JIRA | | | | |
|--|--|--|--|--|

| key | summary | assignee | fixVersion | status |
|-----|---------|----------|------------|--------|
|-----|---------|----------|------------|--------|

| | | | | |
|--|--|--|--|--|
| com.atlassian.sal.api.net.ResponseException: javax.net.ssl.SSLHandshakeException: Received fatal alert: handshake_failure View these issues in JIRA | | | | |
|--|--|--|--|--|

Future Enhancements

Below is the prioritized list of features for future releases of Rice. Voting occurs ~ every 6 months so the order of these items are subject to change.

1. **KRRM-138:** Add support for effective dating to all data in KIM in order to support historical record of data and changes
2. **KRRM-32:** Mobile Application Support
3. **KRRM-90:** Add support in Rice for integration of a Document Management System (DMS) system with Kuali applications
4. **KRRM-139:** Offer RESTful Services from Rice
5. **KRRM-12:** Implement Escalation Functionality
6. **KRRM-77:** Implement "Remove/Replace Principal" functionality
7. **KRRM-143:** Update delivered Rice documents/Screen to Use KRAD
8. **KRRM-147:** Configurable user preferences in KIM
9. **KRRM-94:** Expand KIM functionality to incorporate full Identity and Access Management capabilities
10. **KRRM-25:** Design and implement Kuali Organization Management (KOM)
11. **KRRM-44:** Security Metadata - Data Dictionary enhancements
12. **KRRM-6:** Batch File Scheduler and Monitor
13. **KRRM-9:** Action List Improvements
14. **KRRM-146:** Integrate entities that are used by multiple modules or multiple applications.
15. **KRRM-41:** Research how Kuali Rice can better support Federated Identity Management Services
16. **KRRM-7:** KIM Management Screens
17. **KRRM-82:** Internationalization and Localization Features
18. **KRRM-13:** Implement simple Document-Type-based Delegation Features
19. **KRRM-142:** Custom Function editor in rule editor
20. **KRRM-127:** Research the approach and requirements for a GUI for KEW
21. **KRRM-101:** Rice Framework Compatibility
22. **KRRM-57:** Modularize KRAD
23. **KRRM-56:** Expand support for XML import and export of data
24. **KRRM-8:** Document Search Improvements
25. **KRRM-134:** Enhance KIM with additional features to support KPME and KS establishing KIM as the central person repository (Person Registry)
26. **KRRM-124:** Implement a GUI for Designing KEW Processes
27. **KRRM-133:** Implement Support for Federated Identity Management Services
28. **KRRM-22:** Implement "update" operations for the various KIM services
29. **KRRM-24:** Add support for "versionable" documents
30. **KRRM-50:** A consistent documentation framework for all Rice components (see KRICE Documentation)
31. **KRRM-140:** Complete modularity work on Rice impl
32. **KRRM-4:** Replace KSB with alternative ESB
33. **KRRM-59:** Architecture and functionality review of KEN

34. **KRRM-70:** Standardize Configuration Parameter and System Parameter Names
35. **KRRM-52:** Modularity (SOA+ProjectBuild+OSGI)
36. **KRRM-76:** Rewrite eDocLite to use the KRAD
37. **KRRM-131:** Implement Accessibility Standards
38. **KRRM-68:** Implement proper handling of FERPA and FIPPA regulations
39. **KRRM-102:** Implement declarative loop support within the Kualii workflow engine
40. **KRRM-14:** Improve Capabilities of Exception Routing
41. **KRRM-27:** Support for different DBMS platforms
42. **KRRM-86:** Investigate whether the "embedded" workflow engine model should be changed to not require direct database access from client applications
43. **KRRM-75:** Consolidate Notes and Attachments between KNS and KEW and KS
44. **KRRM-84:** Modularization - Investigate how KIM can be modularized to run standalone
45. **KRRM-88:** Improve configuration of the KNS and Rice